

TEMP SENSOR SPECIFICATION



Version: V1.0 Date: 2019.5.23

DERECTORY

FEATURES.....	2
DEMENSION.....	3
CONNECTION DEFINITION.....	4
Connection.....	5
Technical parameter.....	6

FEATURES

Simple structure and convenient installation;

Products have more obvious advantages in meeting future diversified demands;

User first, experience is king, fool operation is the best result, no training;

The unique anti-retrofitting interface can be used to communicate by simply inserting the interface.

It can be used with the fifth generation of dual color controller, the sixth generation of full color controller and VMF multi-function card.

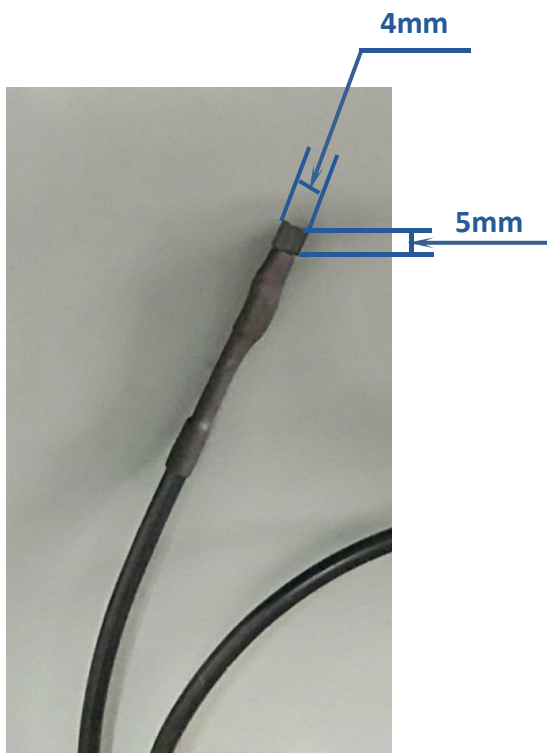
Real-time monitoring of ambient temperature is supported, and the incremental value of temperature measurement from -55°C to +125°C is 0.5°C.

Suitable for all kinds of full-color LED display.

Can be used in the outdoor, reliable quality;

No external components, no external power supply.

DEMENSION

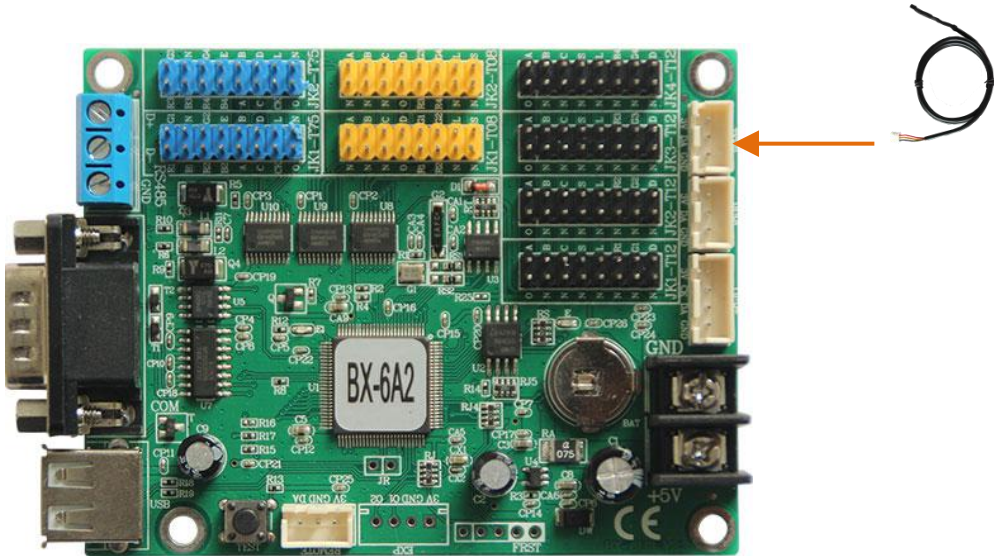
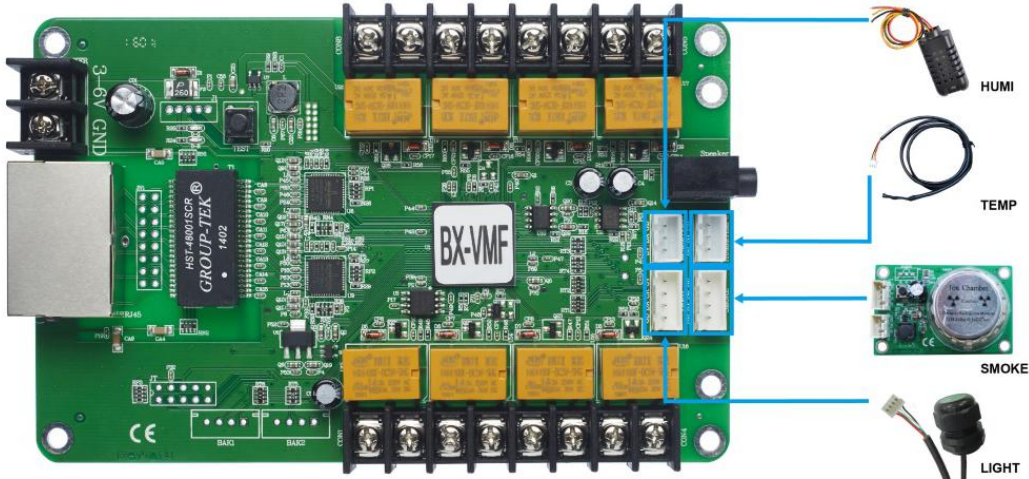


CONNECTION DEFINITION



Connection

Sensor connection with VMF card and other brightness sensor function controller:



Technical parameter

1. It can detect the temperature of the surrounding environment.
2. The sensitivity can be adjusted and the accuracy value is 0.5°C.
3. Measurement range: -55°C~+125°C
4. Working voltage 3.3v-5v.
5. Plug and play, easy to use.

SHANGHAI ONBON TECHNOLOGY INC.

Address: 上海市徐汇区钦州北路 1199 号 88 幢 7 楼

Website: www.onbonbx.com

Tel:86-15921814956

